



Turn to the Experts.™

UC Open Controller

Part Number: OPN-UC

The UC Open controller provides auxiliary building control to interface with lighting, fans, pumps, and other HVAC equipment. The UC Open's factory-engineered control programs provide simple building integration for commercial applications with 11 I/O point capability. It also features native BACnet communications and plug-and-play connectivity to the Carrier i-Vu Open Control System. The Carrier i-Vu Open Control System combines state-of-the-art Carrier equipment, plug-and-play controllers, and the powerful, web-based i-Vu user interface to form a cohesive, intuitive, and fully-integrated BACnet® Building Automation System.

Application Features

- Comprehensive library of factory-engineered control programs available, including: Pump Control, Lighting Control, Time Scheduling with/without Override, Analog Temperature Control, Discrete & Permissive Interlock, Discrete Staging Control, OA Conditions, BTU Metering, Fuel Oil Metering, Electric Metering, Gas Metering, and Water Metering
- Supports Snap graphical programming for creating customized control programs
- Supports Carrier SPT room sensors, which allow for local setpoint adjustment and local overrides

Hardware Features

- Real time-clock keeps time in the event of power failure
- Stand-alone control of up to 11 I/O points using proven algorithms
- Native BACnet MS/TP communications

System Benefits

- Fully plug-and-play with the Carrier i-Vu Open Control System
- Supports demand limiting for maximum energy savings

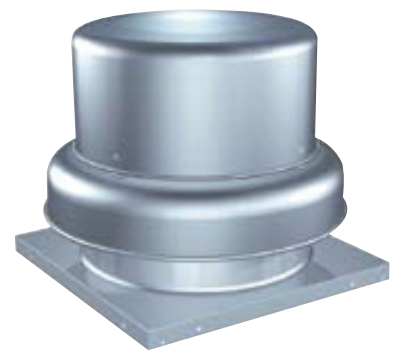
Sample Applications



Electric Meter



Lighting



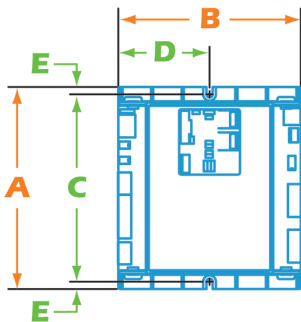
Exhaust Fans

Specifications

Part Number: OPN-UC

BACnet Support	Advanced Application Controller (B-AAC), as defined in BACnet 135-2001 Annex L
Communication Ports	BACnet port: EIA-485 port for BACnet MS/TP communications (9600 bps, 19.2 kbps, 38.4 kbps, & 76.8 kbps); Local Access port: For system start-up and troubleshooting using a PC or BACview (115.2 kbps); Rnet port: For connecting SPT room sensors. The Rnet port supports up to 4 SPT Standard sensors and 1 SPT Plus or SPT Pro sensor for averaging or high/low select control.
Inputs	6 inputs: Configurable for thermistor or dry contact. Inputs 1 and 2 are also configurable for 0–5 VDC sensors. AI's have 12 bit A/D resolution.
Outputs	5 binary outputs: Relay contacts rated at 1 A max. @ 24 VAC/VDC, configured normally open
Protection	Incoming power and network connections are protected by non-replaceable internal solid-state polyswitches that reset themselves when the condition that causes a fault returns to normal. The power, network, input, and output connections are also protected against voltage transient and surge events.
Real Time Clock	Battery-backed real time clock keeps track of time in event of power failure
Battery	10-year Lithium CR2032 battery provides a minimum of 10,000 hours of trend data & time retention during power outages
Status Indicators	LED status indicators for communications, run status, error, and power
Controller Addressing	Rotary DIP switches set BACnet MS/TP address of controller
Listed by	UL-916 (PAZX), cUL-916 (PAZX7), FCC Part 15-Subpart B-Class A, CE EN50082-1997
Operating Temperature	0 to 130°F (-18 to 54°C), 10–90% relative humidity, non-condensing
Storage Temperature	-24 to 140°F (-30 to 60°C), 10–90% relative humidity, non-condensing
Power Requirements	24VAC ± 10%, 50-60Hz 18 VA power consumption (24 VA with BACview) 26VDC (25V min, 30V max) Single Class 2 source only, 100 VA or less

Dimensions



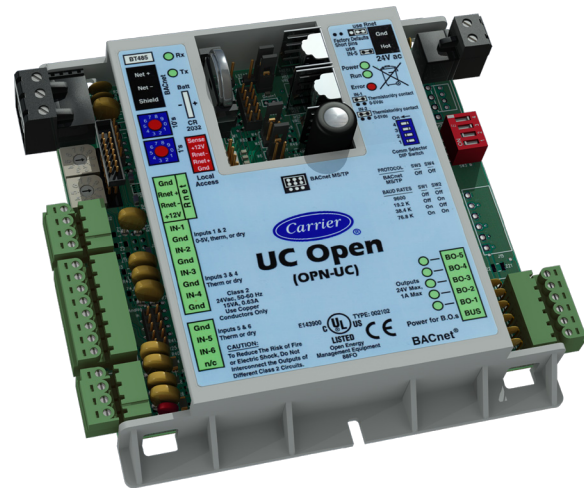
Overall

A: 5-5/8" (14.3cm)
B: 5-1/8" (13 cm)

Depth: 2" (5.1 cm)
Weight: .44 lbs. (0.20 kg)

Mounting

C: 5-1/4" (13.3 cm)
D: 2-9/16" (6.5 cm)
E: 3/16" (.5 cm)



Manufacturer reserves the right to discontinue, or change at any time, specifications or designs, without notice or without incurring obligations.

CARRIER CORPORATION ©2010

A member of the United Technologies Corporation family. Stock symbol UTX. 11-808-472-01 Rev. 05/10



Turn to the Experts.™

www.carrier.com
1-800-CARRIER